



# Savannah Tree Foundation

*Our Trees, Our Future*



**SAVANNAH TREE  
FOUNDATION**  

---

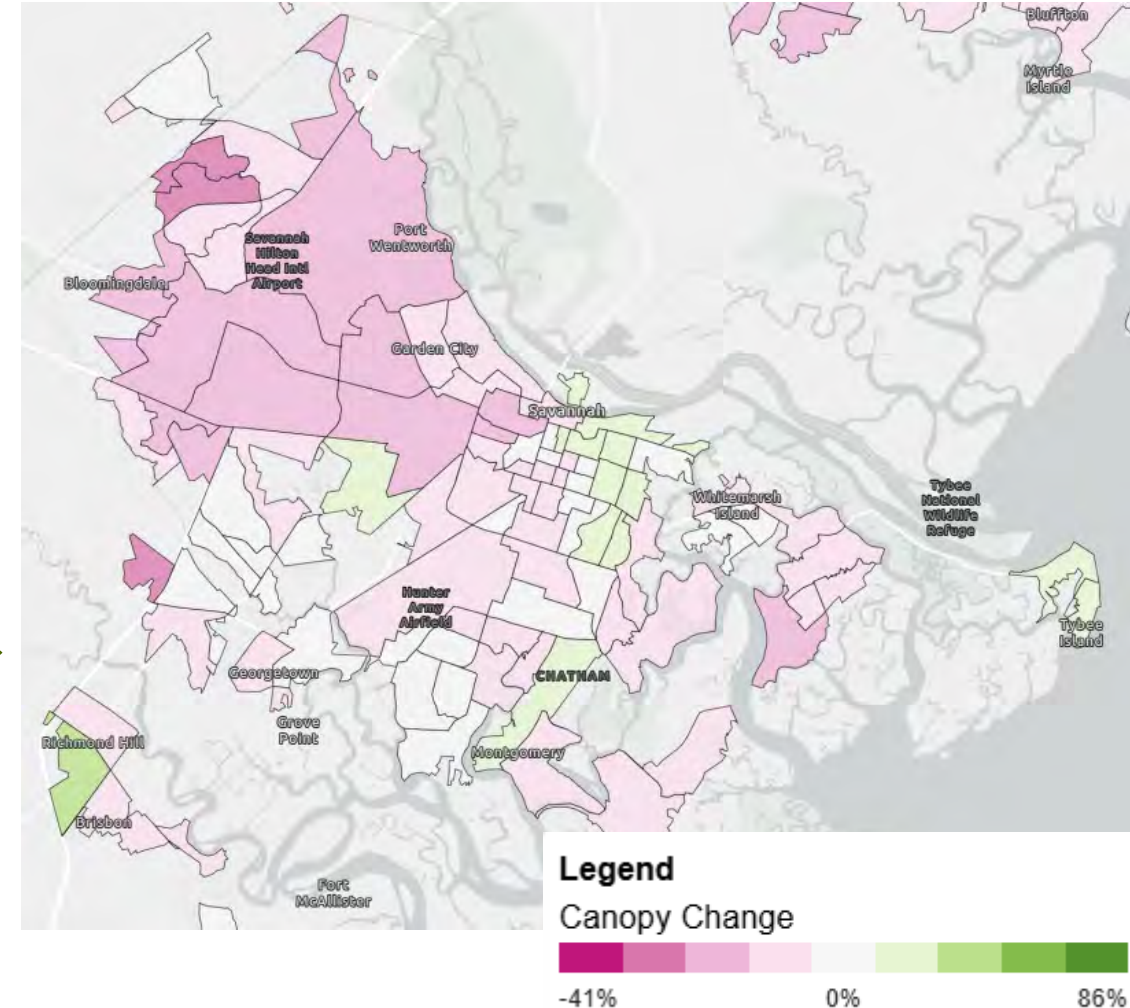
*Our Trees - Our Future*

**MISSION:** Protect and grow Chatham County's urban forest through tree planting, community engagement, and advocacy.

# TREE LOSS IN CHATHAM

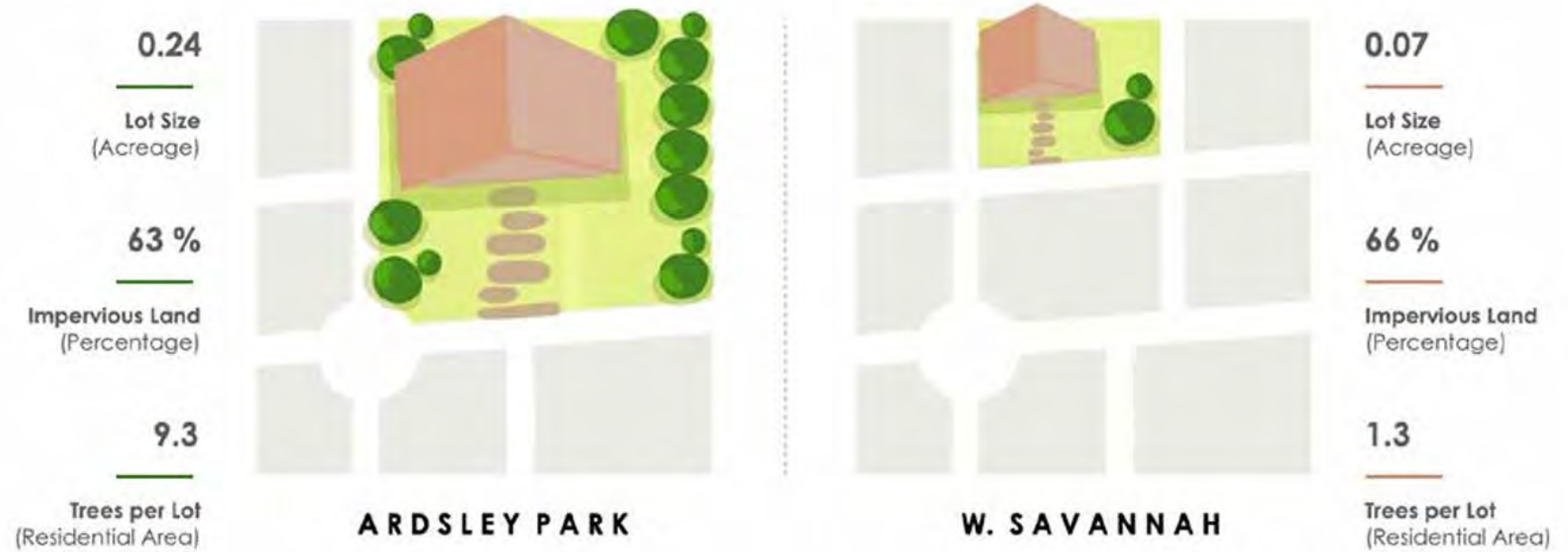
*Coastal Georgia is losing trees at an unsustainable rate at a crucial point in time.*

- TreeCanopy.us data by PlanIT Geo + USDA + Arbor Day Foundation (2017-2023)
- Lost approximately 5,000 acres (-8.5%) of canopy in 6 years
- Equivalent of nearly 6,000 downtown squares
- Most loss in western parts of the county – warehousing, large subdivisions, etc.



# TREE INEQUITY IN CHATHAM

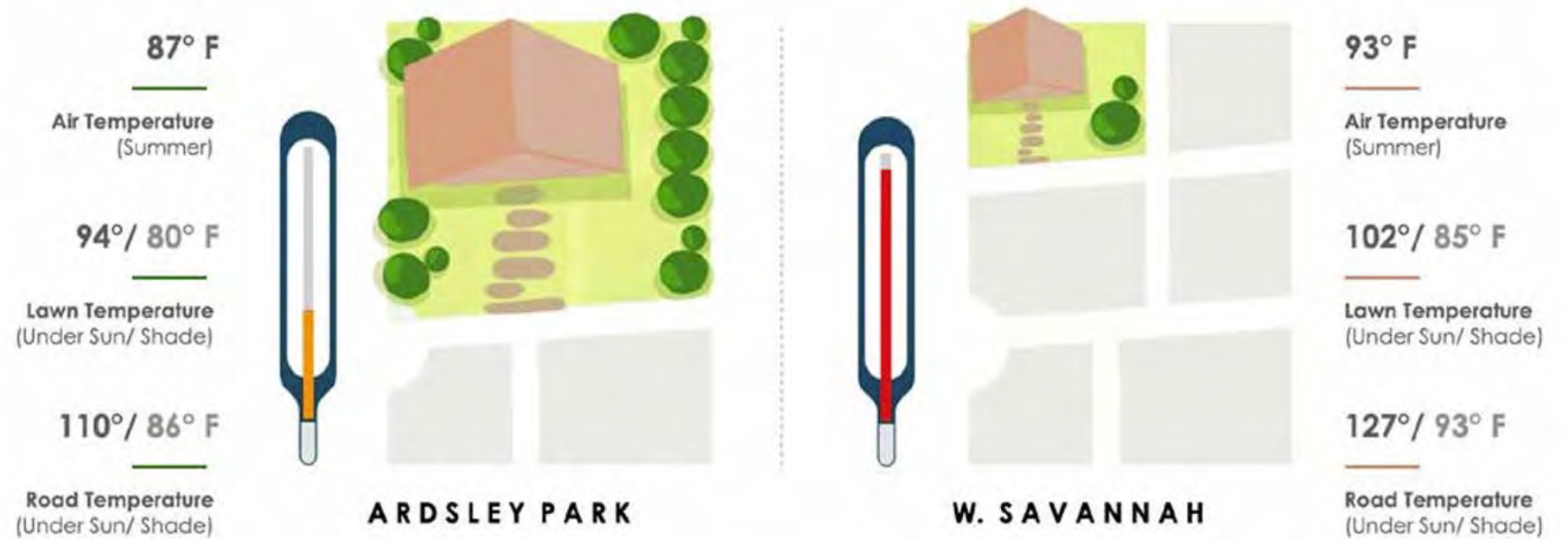
*Low tree canopy often disproportionately affects underserved communities.*



\* From 2022 "Climate Change Assessment and Trees" Whitepaper by SCAD Design for Good Class + STF

# TREE INEQUITY IN CHATHAM

*Low tree canopy often disproportionately affects underserved communities.*



\* From 2022 "Climate Change Assessment and Trees" Whitepaper by SCAD Design for Good Class + STF

# TREE BENEFITS IN CHATHAM

*Tree benefits are crucial to long-term sustainability in our region.*



## LOWER SURFACE & AIR TEMPERATURES

Shaded surfaces can be up to 20-40°F cooler than the peak temperatures of unshaded materials.



## CARBON DIOXIDE REMOVAL

Mature trees can have a significant impact in absorbing carbon dioxide and releasing oxygen in exchange.



## ENERGY SAVINGS

The placement of where trees are planted and grow on properties can help cool a home and reduce energy use.



## CONTROL RUNOFF FROM STORMS

Cities are particularly susceptible to climate-related threats such as storms and flooding.



## REDUCTION OF POLLUTANTS

Trees and forests improve stream quality and overall watershed health.



## URBAN FORESTS SAVE LIVES

Urban forests absorb fine particulate pollution and help in reducing deaths, pulmonary inflammation and other serious health effects.

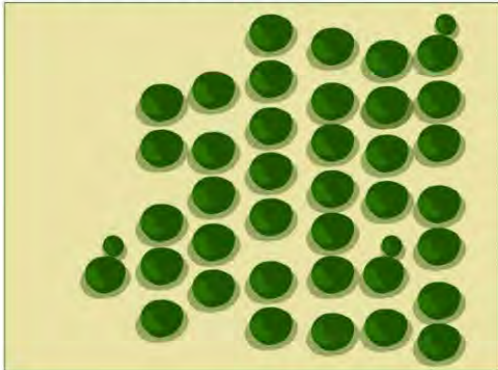
*\* From 2022 series of white papers by SCAD Design for Good Class for STF*

# TREE BENEFITS IN CHATHAM

*Tree benefits are crucial to long-term sustainability in our region.*

## Trees Per Acre and Tree Benefits Over 10 Years\*

ARDSLEY PARK



**38.2**

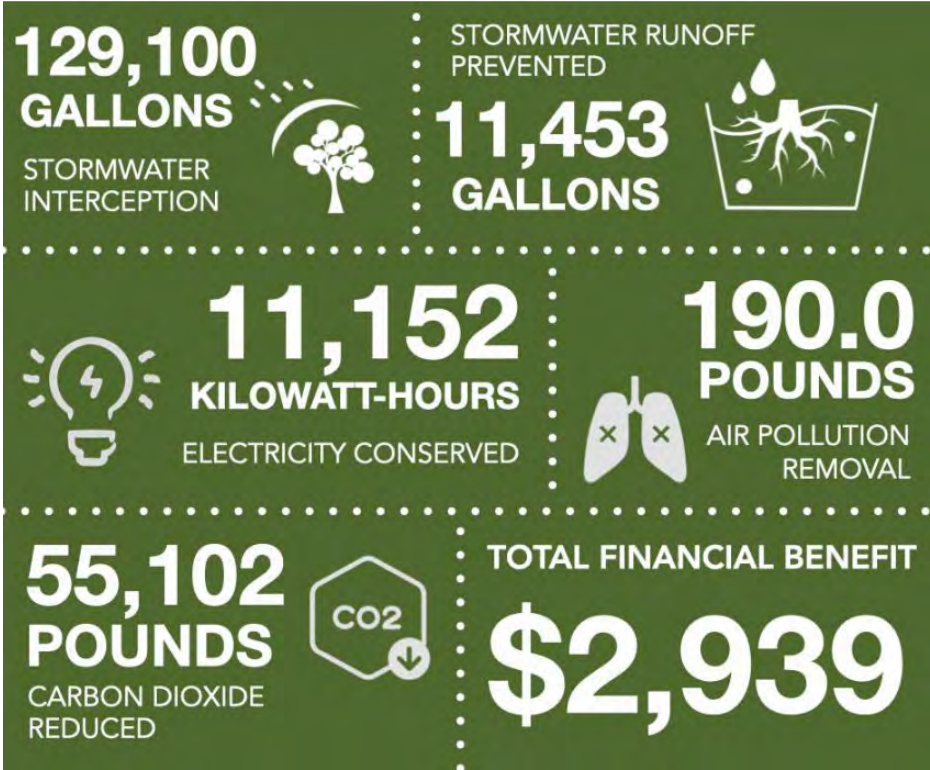
**Trees per Acre**  
(Residential Area)



**3.8**

**Trees per Person**  
(Residential Area)

\*Average Tree Density across the neighborhoods is extrapolated from the average number of healthy trees per acre of residential land. Fact comparisons based on potential benefits from trees per average lot across the neighborhoods. Figures are extrapolated from itree canopy. Average benefit per lot is calculated over 10 years.



\* From 2022 "Climate Change Assessment and Trees" Whitepaper by SCAD Design for Good Class + STF

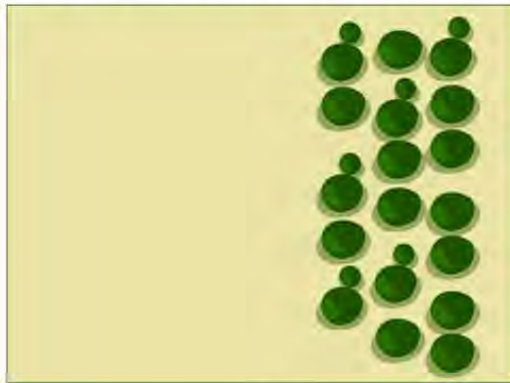
\*\* Benefits calculated per lot.

# TREE BENEFITS IN CHATHAM

*Tree benefits are crucial to long-term sustainability in our region.*

## Trees Per Acre and Tree Benefits Over 10 Years\*

WEST SAVANNAH



18.6

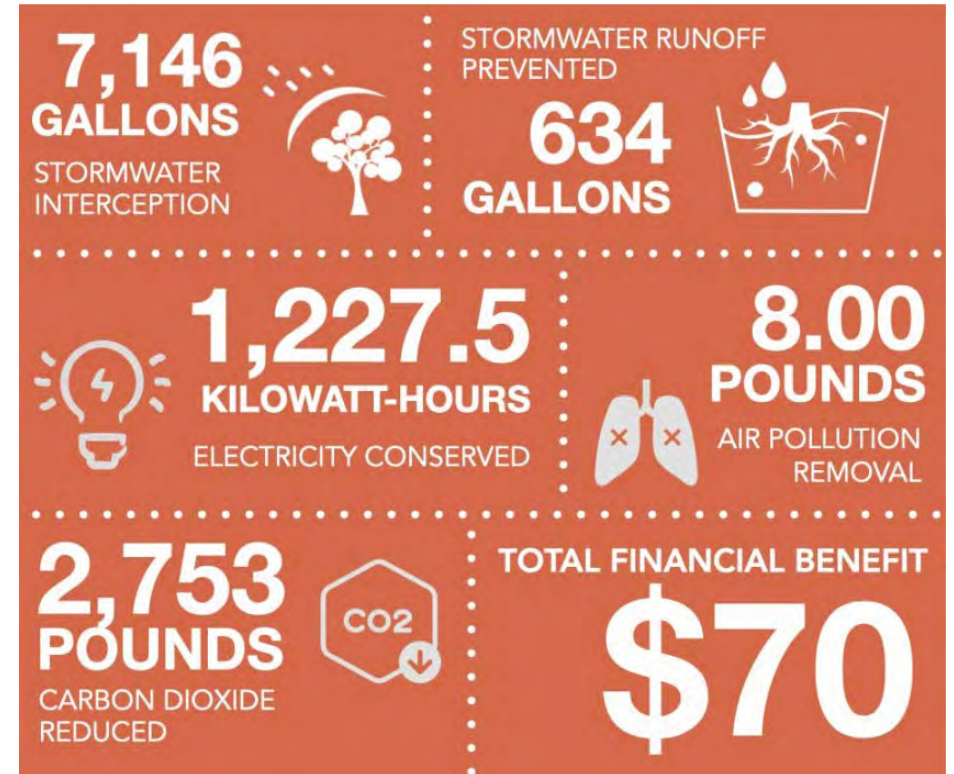
Trees per Acre  
(Residential Area)



0.5

Trees per Person  
(Residential Area)

\*Average Tree Density across the neighborhoods is extrapolated from the average number of healthy trees per acre of residential land. Fact comparisons based on potential benefits from trees per average lot across the neighborhoods. Figures are extrapolated from itree canopy. Average benefit per lot is calculated over 10 years.



\* From 2022 "Climate Change Assessment and Trees" Whitepaper by SCAD Design for Good Class + STF

\*\* Benefits calculated per lot.



Our plan is simple...

PLANT. MORE. TREES.

"A View of Savannah as it Stood the 29<sup>th</sup> of March 1734"

A View of Savannah as it stood the 29<sup>th</sup> of March 1734

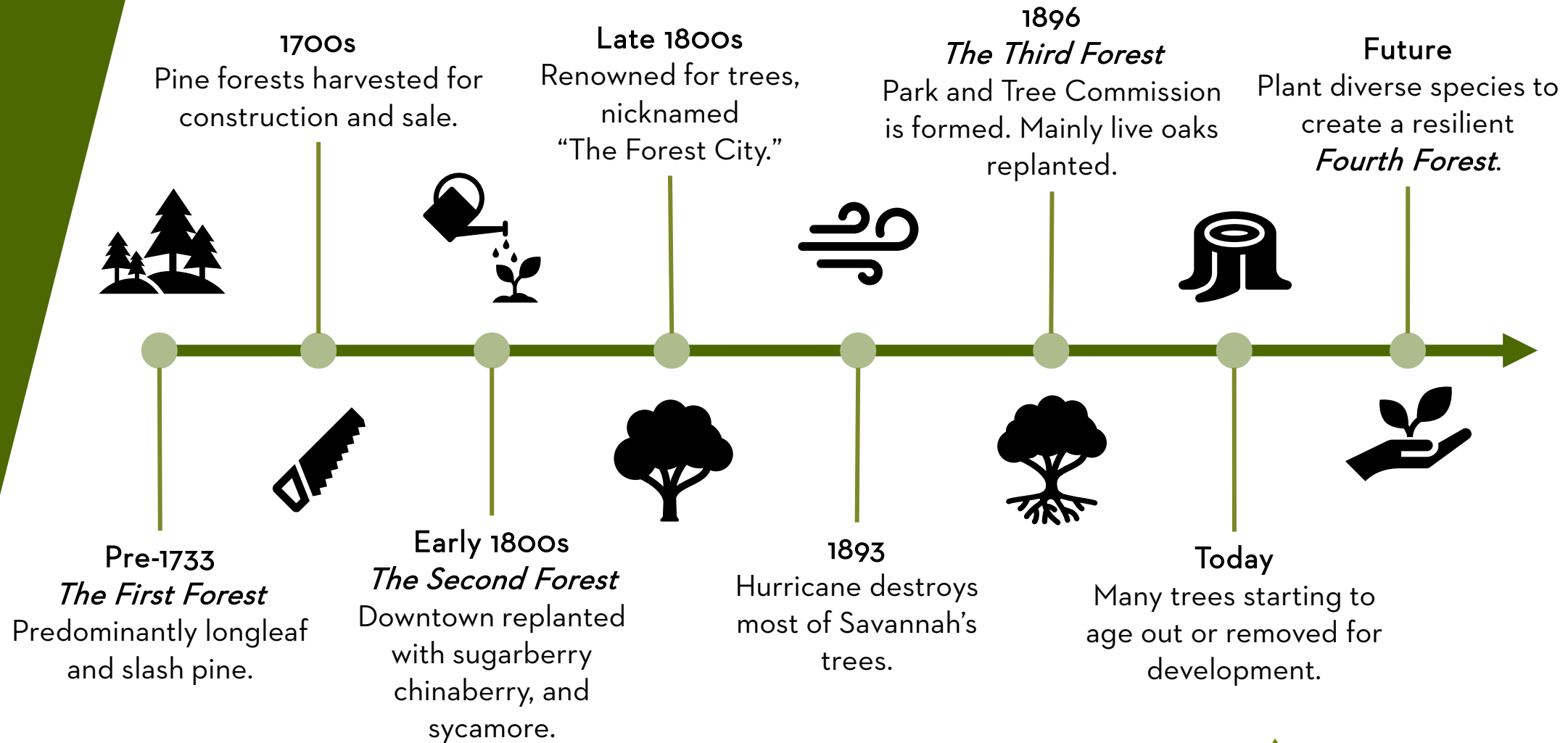


1. The Steer going up
2. Mr. Oglethorpe's Seat
3. The Crown & Bell
4. The Tavernmaster's Cart House
5. The publick Mill
6. The House for Strangers
7. The publick Oven
8. The down Well

To the Hon<sup>ble</sup> the Trustees for establishing the Colony of Georgia in America  
 This View of the Town of Savannah is humbly dedicated by their Honours  
 Obliged and most Obedient Servant  
 Peter Gordon

9. The Lot for the Church
10. The publick Store
11. The Fort
12. The Barracks House
13. The Bell Tower
14. The Great Drive and Battery of Cannon
15. Mathews Island

# Our Urban Forest's History



\*Timeline not to scale

# PLANT. MORE. TREES.

1. Expand our existing community planting efforts
2. Increase our community tree giveaways
3. Grow our community tree nursery
4. Create an urban forestry apprenticeship
5. Launch a private property planting service

# COMMUNITY TREE PLANTINGS

*STF has planted 5,800 trees since 1982,  
including 54+ different tree species across 181 planting sites.*



- 12+ community planting events/year
- 300+ volunteers engaged annually
- Plant in all 9 municipalities in Chatham
- Allows us to reach public spaces for greater impact

# TREE GIVEAWAYS

*STF has given away nearly 5,800 trees since 2015, including 25+ different species of tree reaching 30+ zip codes in Coastal Georgia.*



- 85% of land in Chatham County is privately-owned
- Counteract tree removals on private property
- Promote diverse tree species
- Engages and educates community members

# COMMUNITY NURSERY

*STF launched a community tree nursery in April 2024, made possible by a donation of land from Dulany Industries at Seapoint Industrial Complex.*



- Cultivate 2,500+ trees per year
- Goal is to be our main tree supply, starting with giveaways
- Grow native trees not easily found in stores
- Will start propagating from seed in 2025 to help with urban resiliency

# CHATHAM CANOPY CORPS

*In July 2024, STF launched an urban forestry apprenticeship program, funded by a 4-year, \$1 million grant from the Georgia Forestry Commission.\**



- Year-long, full-time, paid program
- Curriculum includes hard and soft skills, with classroom and field work
- Promotes green job training opportunities in Chatham
- Working with several industry partners for training and post-apprenticeship placement

*\*Funded via pass-through Inflation Reduction Act funds*



# PRIVATE PROPERTY PLANTINGS

*STF is launching a pilot yard tree program as part of the Canopy Corps grant. If successful, we will expand to a (small) fee-for-service program in 2026 for whole county.*



Up to 3 trees available to federally-eligible properties

Visit [savannatree.org](http://savannatree.org) to see if you qualify.

**GET  
FREE TREES!**

**FOR YOUR YARD**

SAVANNAH TREE FOUNDATION  
OUR TREES • OUR FUTURE

- Contacted about 4,200 households in western Savannah and Garden City
- 160 constituents interested and live in a qualified EPA-designated census block
- 500+ trees requested, planting to start in January 2025
- Important for elderly and others who may not be able to come to a giveaway or plant a tree themselves



# SAVANNAH TREE FOUNDATION

by the numbers (as of 12/2024)

5800

TOTAL TREES PLANTED

5795

TREES GIVEN AWAY

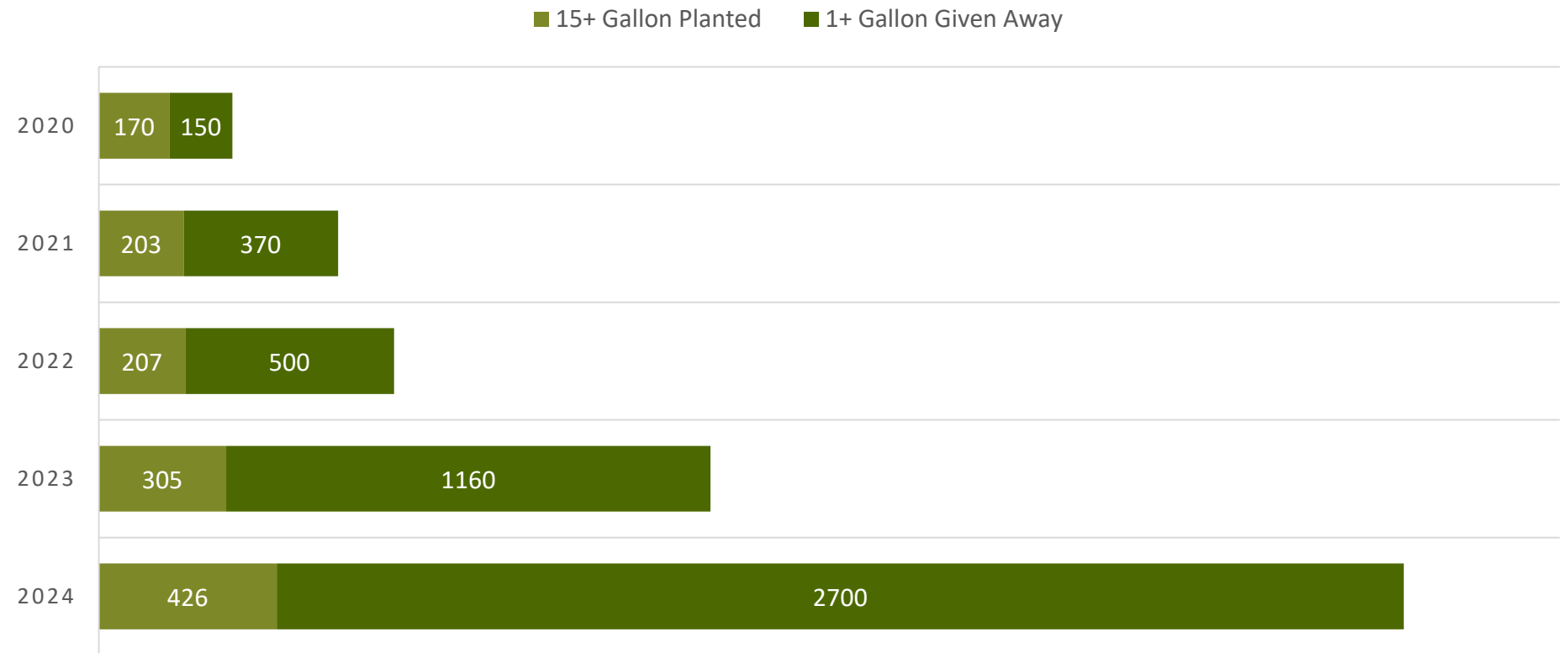
181

PLANTING SITES

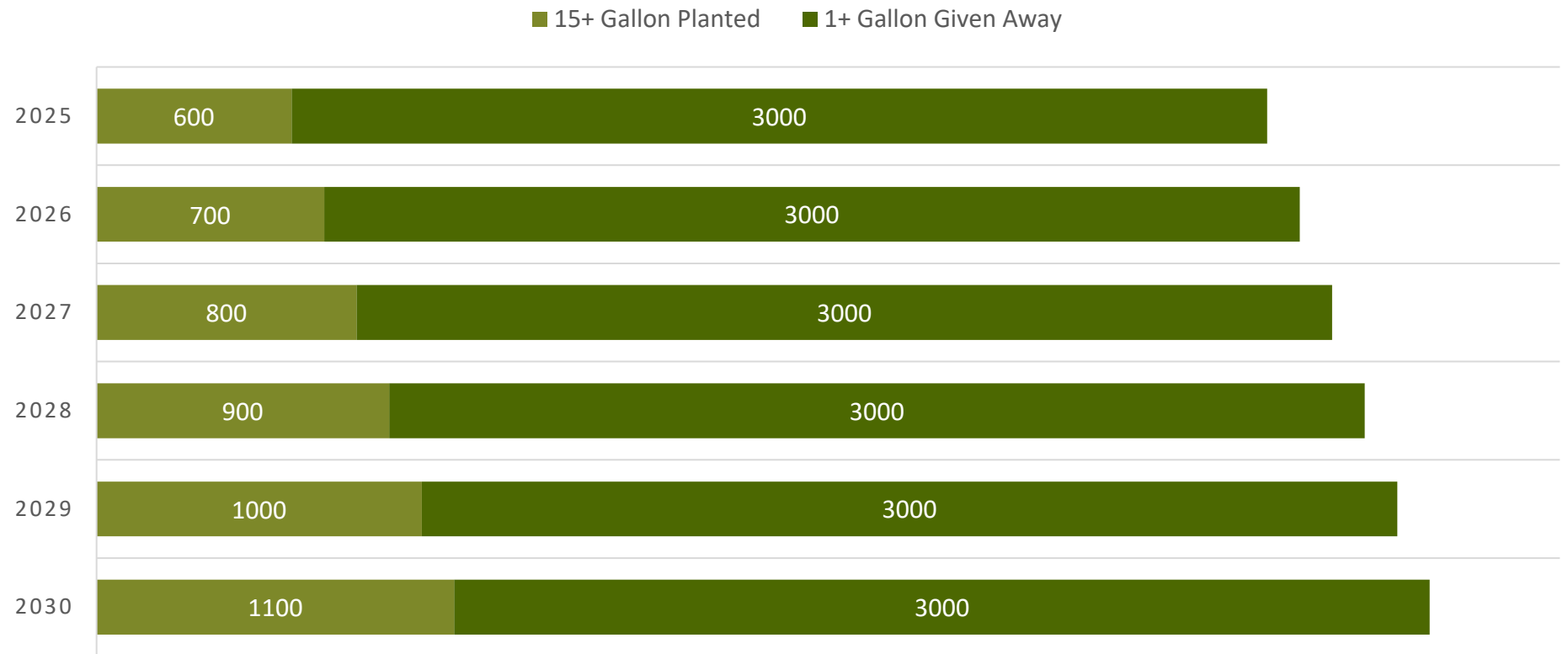
42

YEARS STRONG

# Trees Added by Year - 2020 to today



# Trees Added by Year – Future Goals





# SAVANNAH TREE FOUNDATION

by the numbers (goals for 2030)

~~5800~~

**10,000+**

TOTAL TREES PLANTED

~~5795~~

**20,000+**

TREES GIVEN AWAY

~~181~~

**500+**

PLANTING SITES

~~42~~

**48**

YEARS STRONG

# Help us grow our future forest.

- Join the conversation around tree ordinance revisions.
  - Attend forums or tell STF your priorities
- Volunteer at a community tree planting or nursery event
  - We host an event almost every Saturday, November - March
- Plant a tree in YOUR yard
  - Get a tree from a giveaway or talk to us about a yard tree
- Donate to STF
  - Your donations support tree giveaways, education, and more



**SAVANNAH TREE**

**- FOUNDATION -**

---

*Our Trees - Our Future*

Learn more about Savannah Tree Foundation [online](#).

Email or call us

[info@savannahtree.org](mailto:info@savannahtree.org) | 912-233-TREE (8733)