

# City of Savannah Tree Inventory

State of the Trees 2024



# Why do we need a tree inventory?

- To know what we have
- To move from being reactive to being proactive
- To get information about individual trees, but also the entire urban forest



# Why do we need a tree inventory?

- People care about trees
- Communities care about the forest
- Urban forestry managers care about all of it: The people, the trees, the community, and the forest
- A comprehensive tree inventory helps us to manage that from one vantage point



## How it started

- Around 2002 the City of Savannah completed its first tree inventory
- Kind of a big deal
- Very thorough, very accurate, very complete
- But....



# How it started

- It was never updated
- Shows a snapshot but becomes more outdated every day
- Things change. Trees grow, they fall over, they die.
- Annexations happen



# How it started



# How it's going

- In 2020, the City decided it was time to update the inventory
- Hudson Hill/Bayview completed as a test
- Everything looked good
- But....



# How it's going

- We're finding tree issues
- Issues cost money
- Let's expand the program
- Expansions cost money
- Neighborhood cycle maintenance program was born





## How it's going

- 2021- Forestry Superintendent was created
- March 2022- Inventory work begins
- July 2022- Tree work begins
- 2023- Decide to bring the inventory collection in house and integrate with 311
- 2024- New Forestry Inspector position created



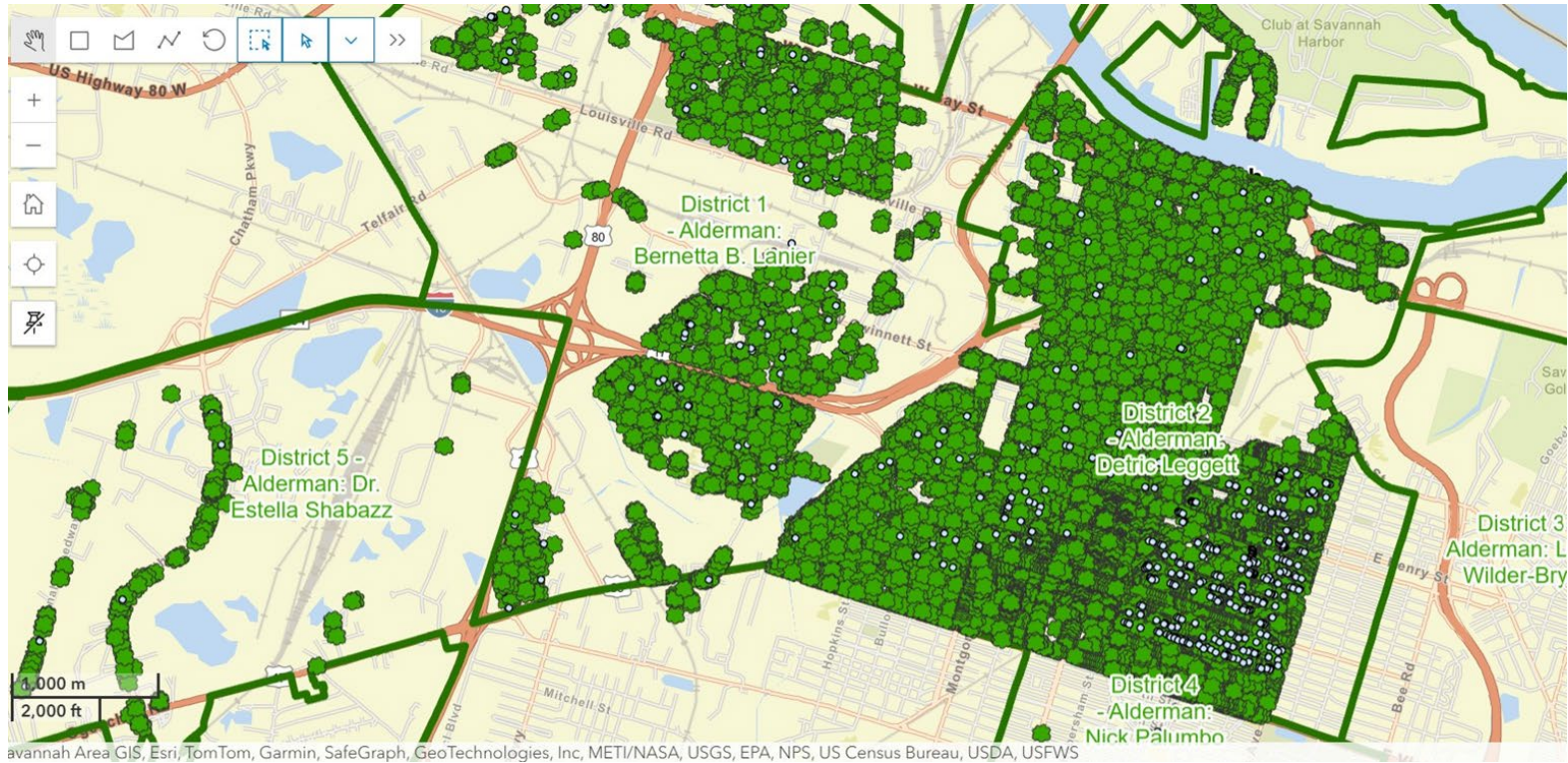
# How it's going

To Date:

- ✓ 26,000 total assets entered
- ✓ 24,000 actual trees
- ✓ 500 potential planting sites
- ✓ 10,000 trees pruned
- ✓ 400 trees removed



# How it's going

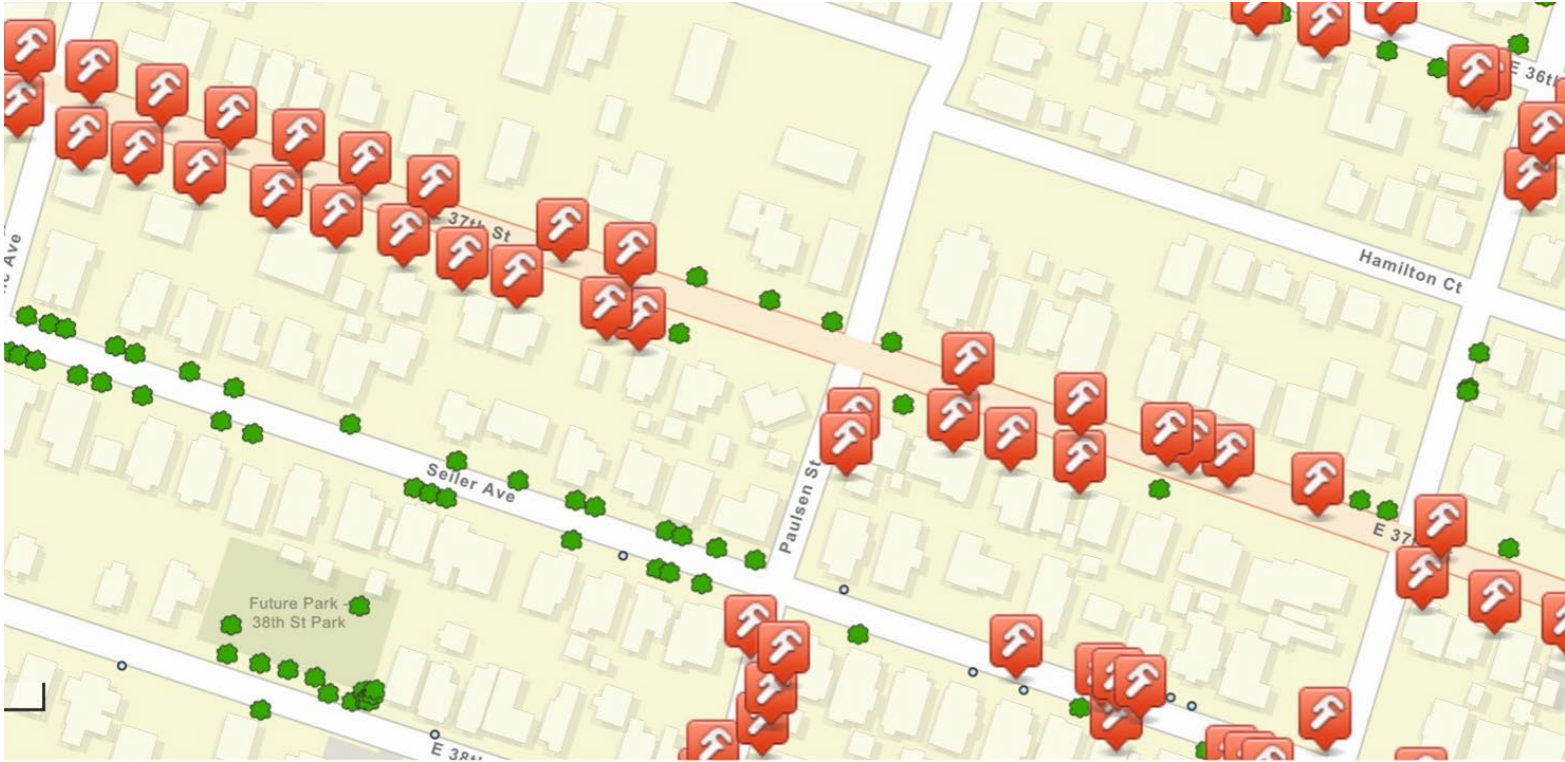


# Current process for inventory and tree work

- First forestry inspector inventories an area
- Second forestry inspector will follow behind and create work orders, which will get assigned to the contractor
- Third inspector coordinates with the contract and inspects the final work



# Current process for inventory and tree work

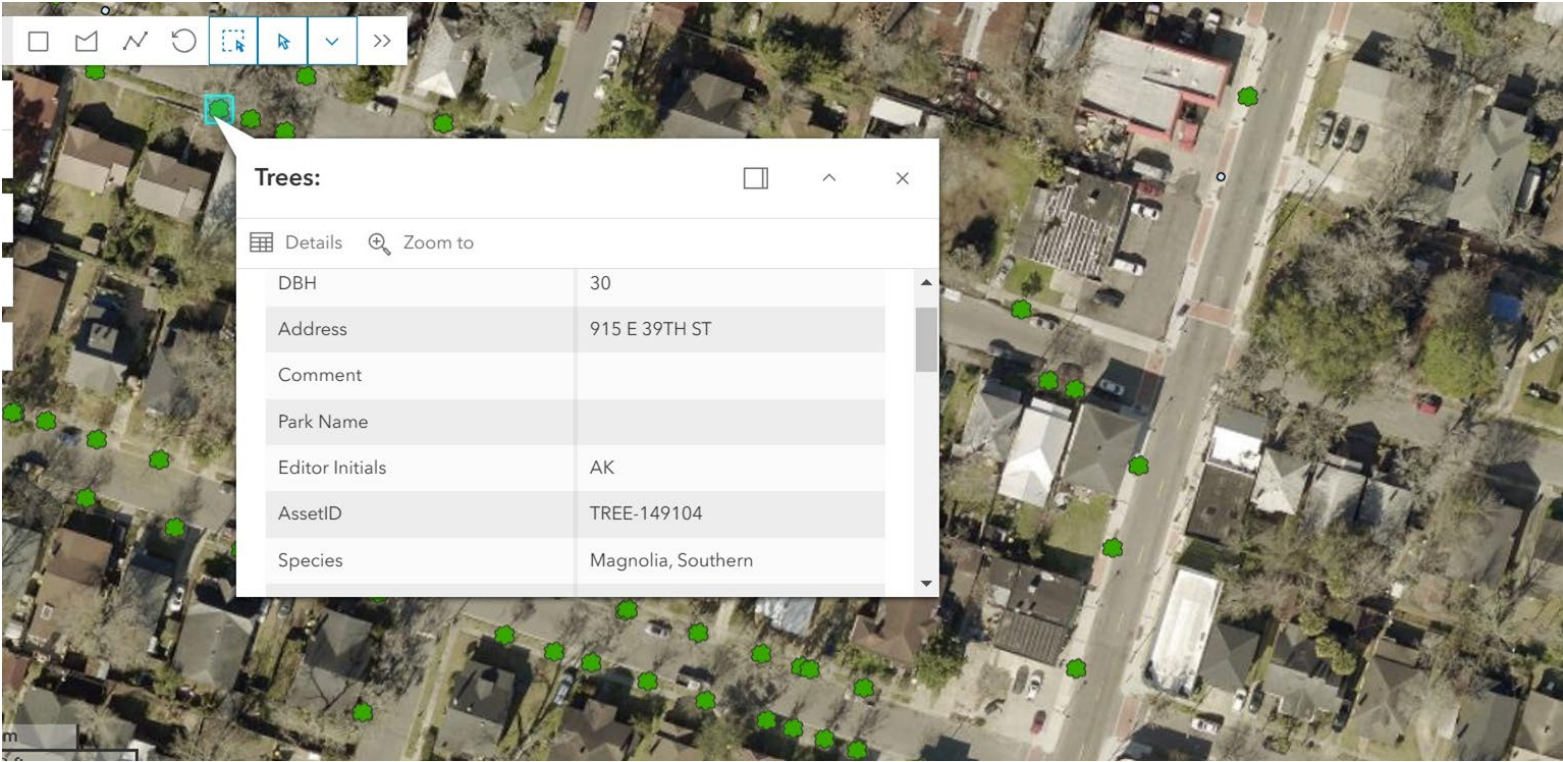


# Integration of Inventory and 311

- 311 service requests transfer into Cityworks
- Work orders can be attached to specific assets
- Both contractor crews and City crews access work orders in the same system
- The inspection and work order history of a tree is attached to that tree. Like, forever.



# Integration of Inventory and 311



# Integration of Inventory and 311

<b>Address</b>	915 E 39TH ST
<b>Comment</b>	
<b>Park Name</b>	
<b>Editor Initials</b>	AK
<b>GlobalID</b>	{6CC28581-06E3-4388-8319-B49A8E344570}
<b>AssetID</b>	TREE-149104
<b>Species</b>	Magnolia, Southern
<b>Height</b>	70





# Integration of Inventory and 311

## Asset Details

Asset

Trees - TREE-149104

ATTRIBUTES SUMMARY (1) **WORK ORDERS (1)** ATTACHMENTS

### Open Work Orders

<input type="checkbox"/>	Id	Description	Status	Start Date	Finish Date	Submit To
<input type="checkbox"/>	<a href="#">2185462</a>	Tree - Prune	030_IP	11/06/2024, 3:02 PM	03/06/2025, 3:02 PM	Contractor, Kolcun Tree



< 1-1 of 1 >

### Closed Work Orders

<input type="checkbox"/>	Id	Description	Actual Finish Date	Total Cost	Hours	Completed By
--------------------------	----	-------------	--------------------	------------	-------	--------------

No records found



< >

**Total Cost: \$0.00 Total Hours: 0**

[Open Selected Work Orders](#)

Close



# Challenges and lessons learned(so far)

- Inventories are hard
- Inventories are expensive
- Inventories are surprisingly subjective
  - Humans are still required
  - Humans make mistakes
  - Humans, on occasion, see things differently



# Challenges and lessons learned(so far)



# Challenges and lessons learned(so far)



# Challenges and lessons learned(so far)



# Looking forward

- Estimated completion in 2027
- Will help to continue to justify and refine our annual budget based on actual data
- Major part of an eventual Comprehensive Urban Forest Management Plan.





# Thank You

## State of the Trees 2024

